

MONTHLY MEMBERSHIP PROGRESS REPORT

District 13 OH1

Results as of: 12/31/2025

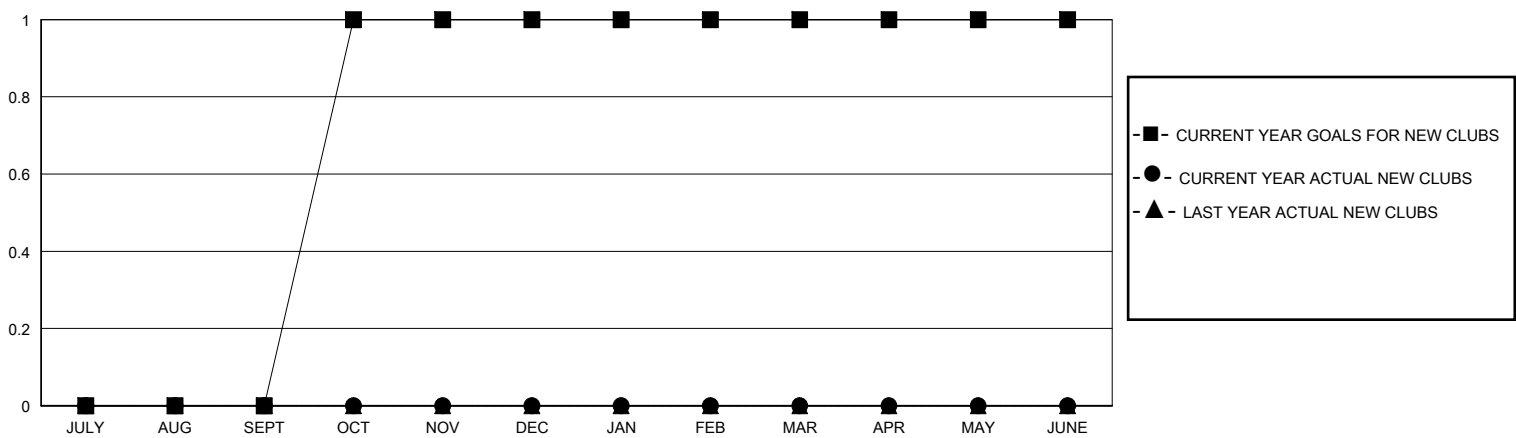
GMT:

LOCATION OHIO

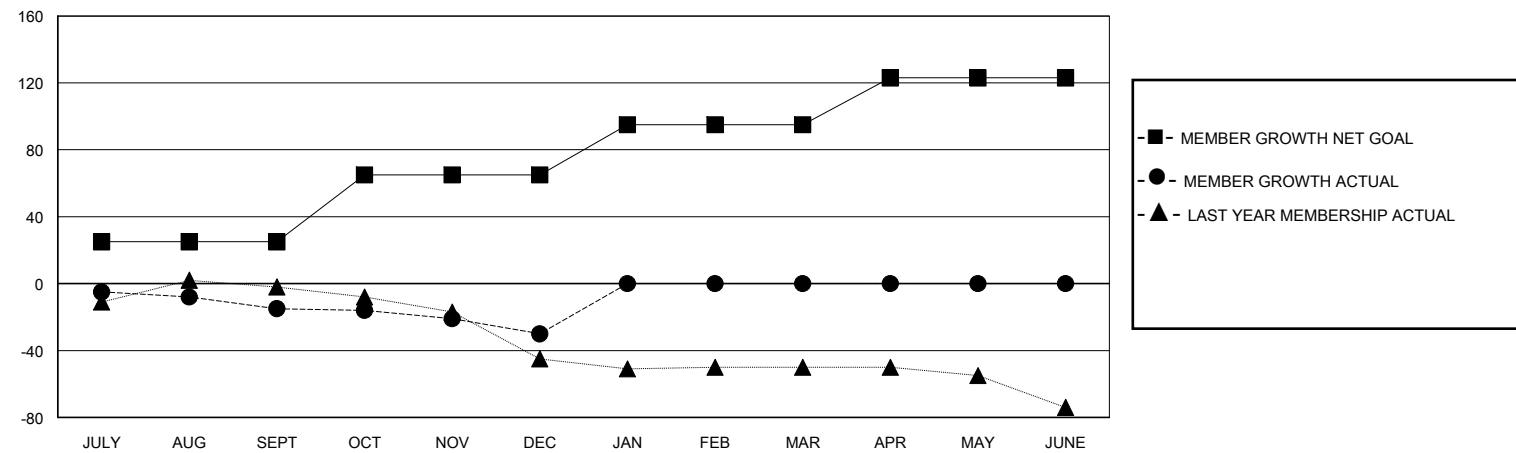
GMT CA

Clubs				Members			
RESULTS FOR 2025-2026				RESULTS FOR 2025-2026			
QUARTER	NEW CLUB GOAL	NEW CLUBS	DROPPED CLUBS	QUARTER	MEMBER GROWTH NET GOAL	MEMBER GROWTH ACTUAL	DROPPED MEMBERS ACTUAL (including transfers)
JULY/AUG/SEPT	0	0	0	JULY/AUG/SEPT	25	16	23
OCT/NOV/DEC	1	0	0	OCT/NOV/DEC	40	13	27
JAN/FEB/MAR	0	0	0	JAN/FEB/MAR	30	0	0
APR/MAY/JUNE	0	0	0	APR/MAY/JUNE	28	0	0

GOALS AND ACTUAL NEW CLUBS CUMULATIVE



GOALS AND ACTUAL MEMBERS CUMULATIVE



DROPPED CLUBS: 0	15 CLUBS OF 48 ADDED 1 OR MORE NEW MEMBERS	<u>GENDER DISTRIBUTION</u> MALE 1,030 (78.45%) FEMALE 283 (21.55%)
<u>DROPPED MEMBERS</u> DECEASED 13 CLUB CANCELLED 0 OTHER 38 TOTAL 51	<a href="#">CLICK HERE FOR CUMULATIVE MEMBERSHIP DATA</a>	TOTAL FAMILY UNIT MEMBERS 213 FAMILY MEMBERS PAYING HALF DUES 109